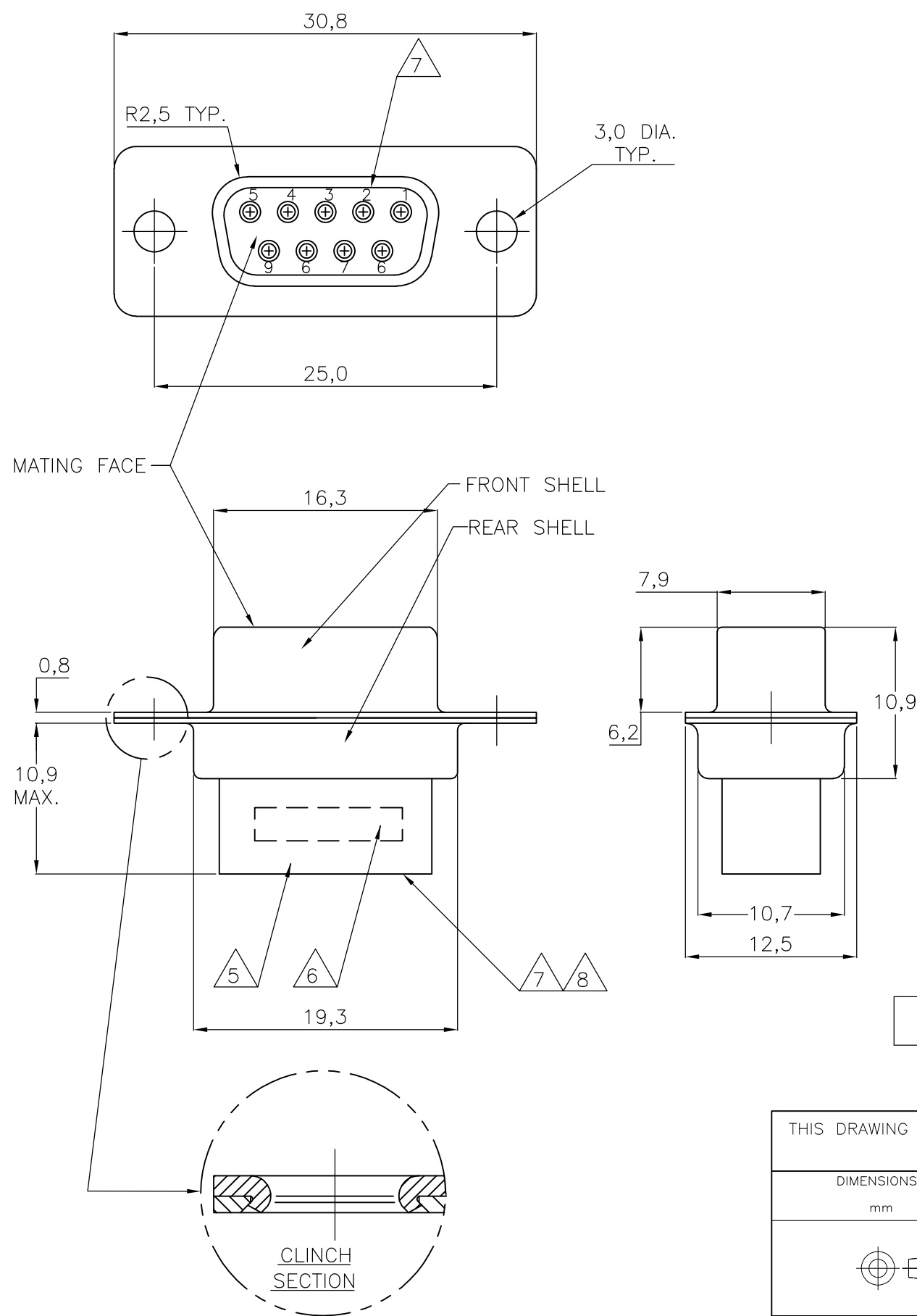


THIS DRAWING IS UNPUBLISHED. RELEASED FOR PUBLICATION  
 © COPYRIGHT - BY TYCO ELECTRONICS CORPORATION. ALL RIGHTS RESERVED.

| LOC | DIST | REVISIONS |     |               |          |     |      |
|-----|------|-----------|-----|---------------|----------|-----|------|
|     |      | P         | LTR | DESCRIPTION   | DATE     | DWN | APVD |
| H   | -    |           | J   | SR10-0382-02  | 23-08-02 | KV  | -    |
|     |      |           | K   | SR10-0457-02  | 24-10-02 | KV  | -    |
|     |      |           | L   | ECR-07-008767 | 16-07-07 | BSV | KMA  |



**NOTES:**

- THIS RECEPTACLE ACCEPTS SIZE 20 REC. CONTACTS.
  - MAXIMUM WIRE INSULATION RECOMMENDED FOR USE WITH THIS RECEPTACLE IS 1,73 DIA. MAX..
  - RETENTION TINES ARE AN INTEGRAL PART OF INSERT.
  - FOLLOWING INSERTION/REMOVAL TOOLS ARE RECOMMENDED FOR USE WITH THESE CONNECTORS:  
 32-28AWG/28-24AWG CONTACTS  
 91067-3 INSERTION/REMOVAL  
 726363-1 INSERTION ONLY  
 24-20AWG CONTACTS  
 726363-1 INSERTION ONLY  
 726364-1 REMOVAL ONLY
- 5 INSERTS: GLASSFILLED SELF-EXTINGUISHING PBT, COLOR BLACK.  
 6 AMP DATE CODE, AMP PART NUMBER, INK STAMPED.  
 7 RAISED CAVITY IDENTIFICATION 0,8 HIGH.  
 8 RAISED CAVITY IDENTIFICATION NUMBERS ON WIRE SIDE ARE WHITENED FOR 164531-9.

|          |                     |                    |                 |            |
|----------|---------------------|--------------------|-----------------|------------|
| OBSOLETE | BRIGHT TIN          | BRIGHT TIN         | STEEL           | 164531-9 8 |
|          | BRIGHT TIN          | BRIGHT TIN         | STEEL           | 164531-4   |
|          | PLATING FRONT SHELL | PLATING REAR SHELL | MATERIAL SHELLS | PARTNUMBER |

|  |  |                              |   |                 |  |
|--|--|------------------------------|---|-----------------|--|
| THIS DRAWING IS A CONTROLLED DOCUMENT. |  | DWN<br>D. KESSLER<br>11FEB99 | Tyco Electronics Corporation<br>'s-Hertogenbosch, Nederland |                 |  |
| DIMENSIONS:<br>mm                      |  | CHK<br>W. SOOMERS            | NAME<br>9 POS HDP-20 RECEPTACLE<br>CONNECTOR SIZE 1         |                 |  |
| TOLERANCES UNLESS OTHERWISE SPECIFIED: |  | APVD<br>W. SOOMERS           | PRODUCT SPEC  |                 |  |
| 0 PLC ± -                              |  | APPLICATION SPEC             |   |                 |  |
| 1 PLC ± -                              |  | SIZE<br>A3                   |   |                 |  |
| 2 PLC ± -                              |  | CAGE CODE<br>-               |   |                 |  |
| 3 PLC ± -                              |  | DRAWING NO<br>C-164531       |   |                 |  |
| 4 PLC ± -                              |  | RESTRICTED TO<br>-           |   |                 |  |
| ANGLES ± -                             |  | WEIGHT<br>-                  |   |                 |  |
| FINISH<br>-                            |  | CUSTOMER DRAWING             |   |                 |  |
|  |  | SCALE<br>NTS                 |   | SHEET<br>1 OF 1 |  |
|  |  |                              |   | REV<br>L        |  |